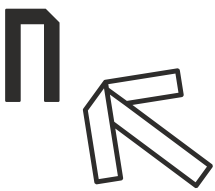
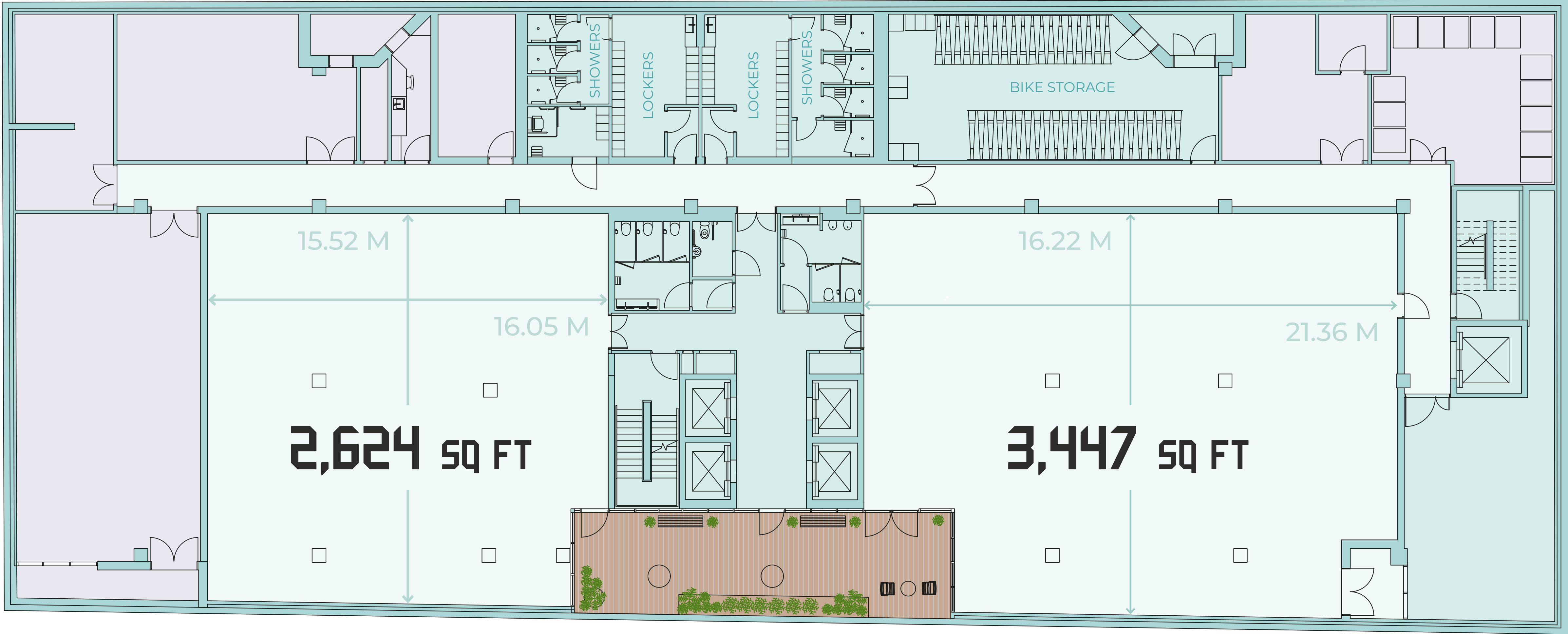


SOUTHWORKS

LOWER GROUND



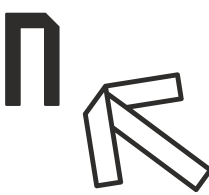
Rushworth Street



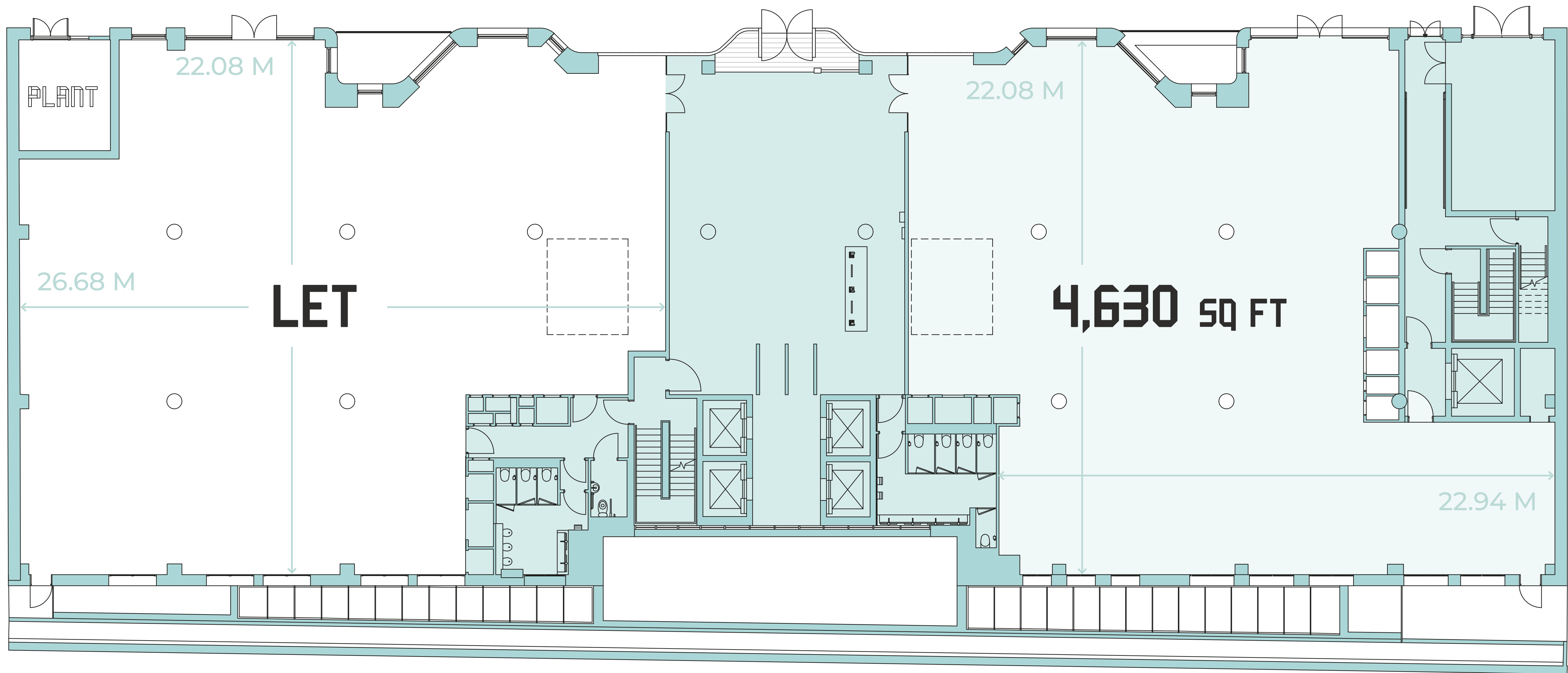
6,071 SQ FT
564 sq m

TERRACE
667 SQ FT
62 SQ M

SOUTHWORKS GROUND



Rushworth Street



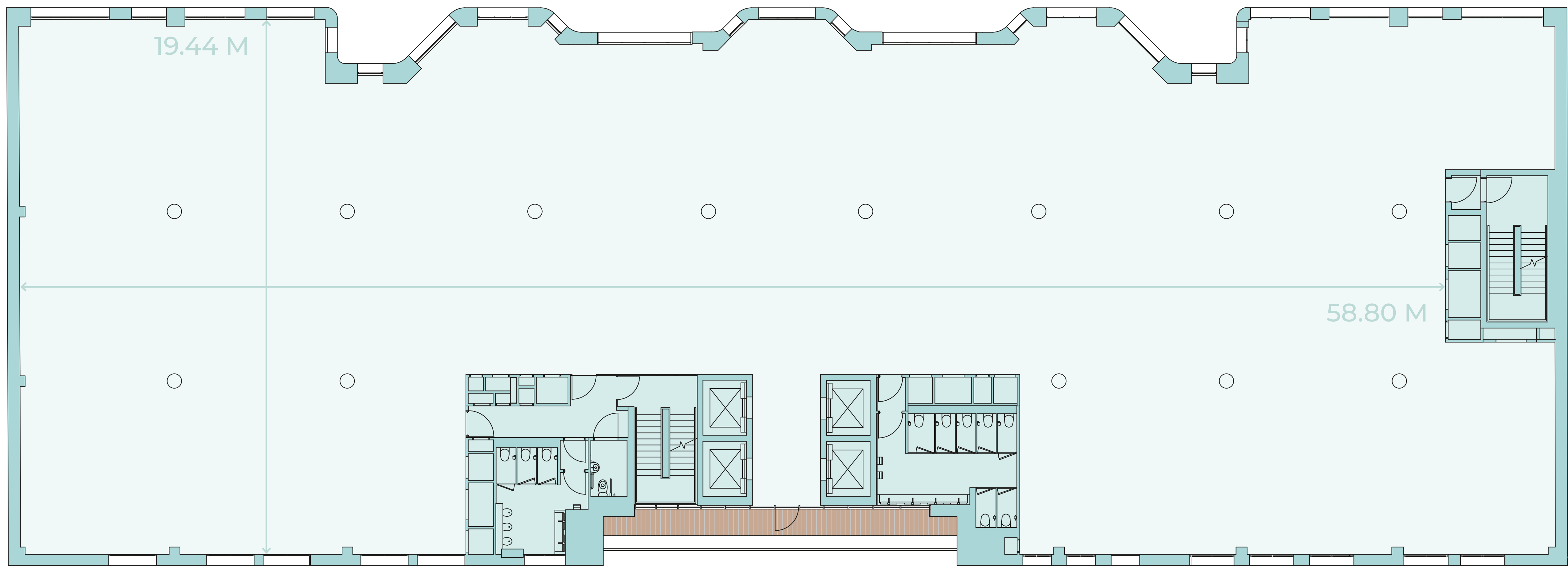
Delivered by
InstantManaged

4,630 SQ FT
430 SQ M

SOUTHWORKS SECOND



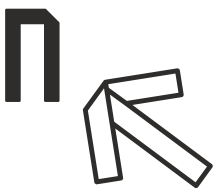
Rushworth Street



12,411 sq ft
1,153 sq m

TERRACE
248 sq ft
23 sq m

SOUTHWORKS COMMUNAL ROOF TERRACE



Rushworth Street

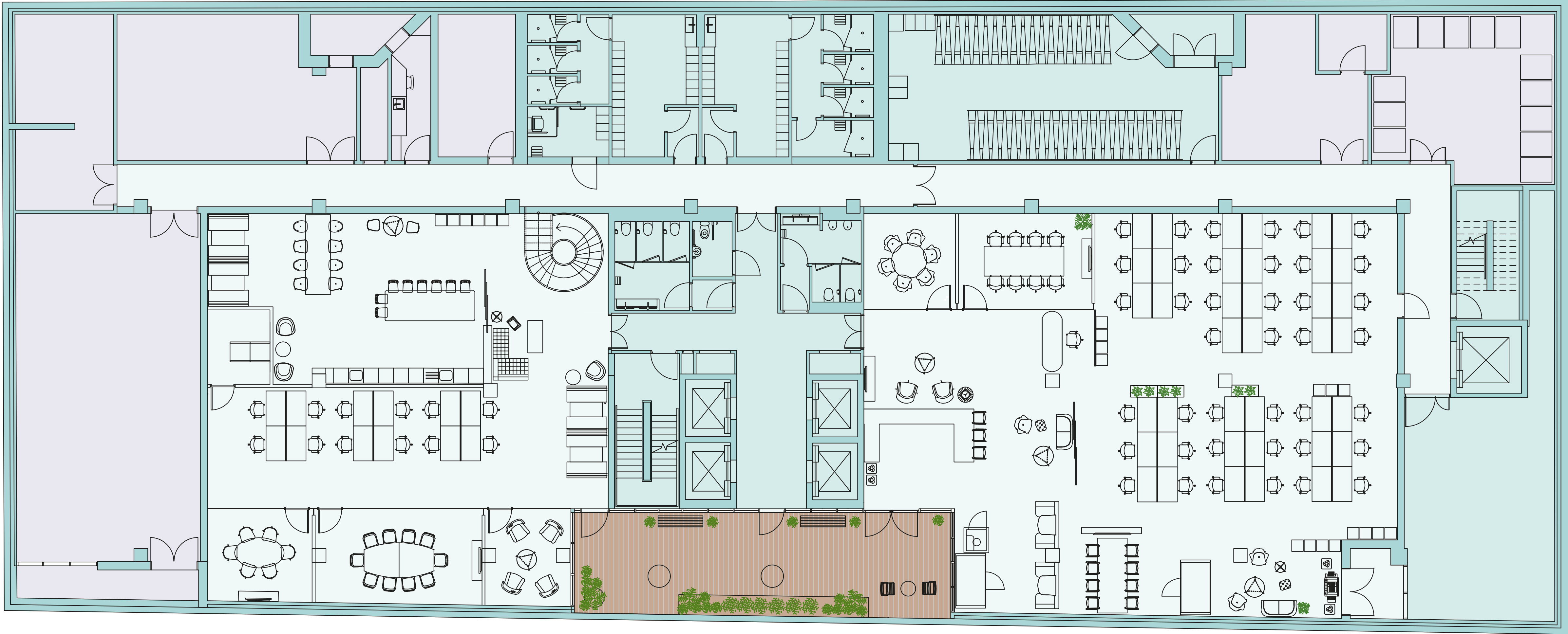
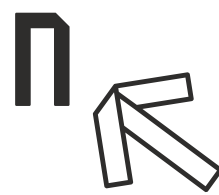


TERRACE
1,195 SQ FT
111 SQ M

LOWER GROUND FLOOR
SPACEPLAN

Rushworth Street

Delivered by
InstantManaged



LEFT HAND SIDE

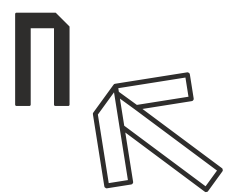
- | | | |
|----|------------------------|------------------|
| 12 | OPEN PLAN WORKSTATIONS | WORK LOUNGE AREA |
| 1 | 10 PERSON MEETING ROOM | BOOTH SEATING |
| 1 | 6 PERSON MEETING ROOM | BREAKOUT AREA |
| 1 | 4 PERSON MEETING ROOM | COMMS ROOM |
| 12 | LOCKERS | |

RIGHT HAND SIDE

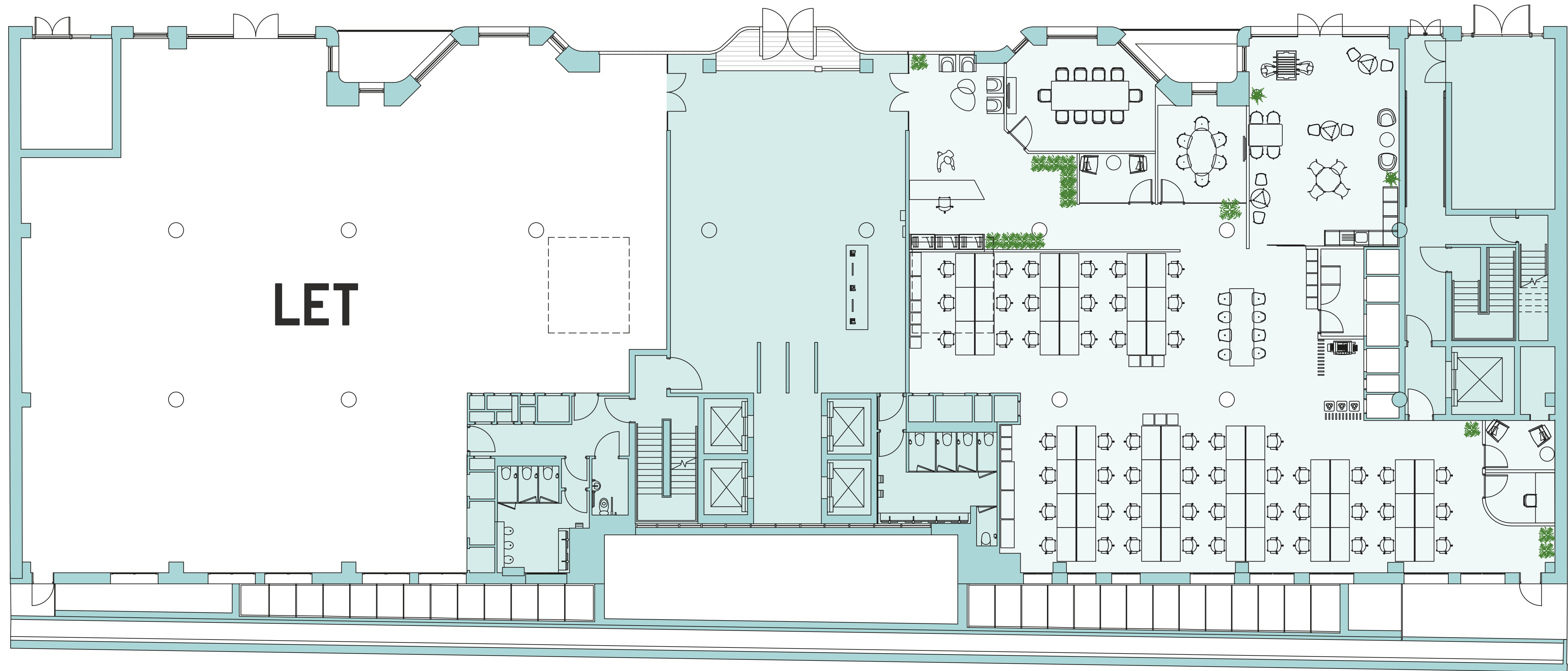
- | | | |
|----|------------------------|-----------------------|
| 40 | OPEN PLAN WORKSTATIONS | RECEPTION-LOUNGE AREA |
| 1 | 8 PERSON MEETING ROOM | TEA POINT |
| 1 | 6 PERSON MEETING ROOM | WORK LOUNGE AREA |
| 54 | LOCKERS | PRINT AREA |
| 3 | PHONE BOOTH | |

GROUND FLOOR
SPACEPLAN

Delivered by
InstantManaged



Rushworth Street



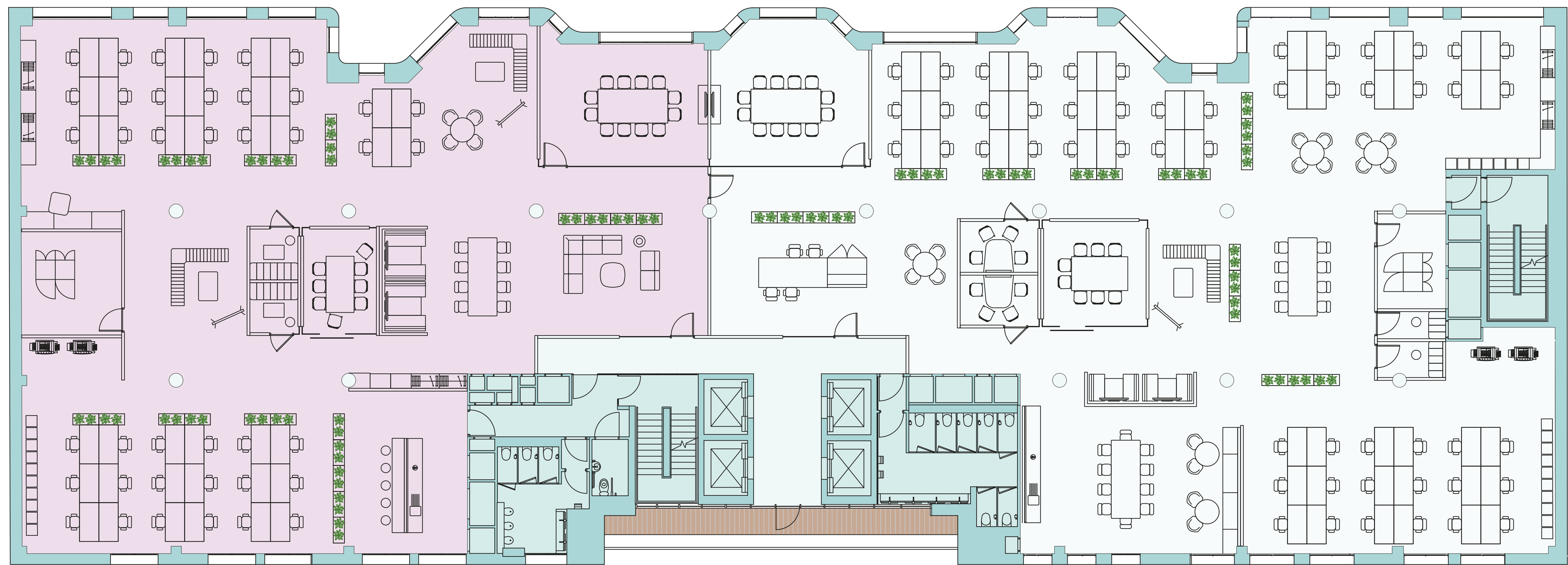
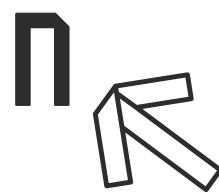
RIGHT HAND SIDE

- 54 OPEN PLAN WORKSTATIONS
- 1 10 PERSON MEETING ROOM
- 1 6 PERSON MEETING ROOM
- 1 2 PERSON MEETING ROOM
- 60 LOCKERS

- PRINT AREA
- BREAKOUT AREA
- RECEPTION
- COMMS ROOM

SECOND FLOOR
SPLIT SPACEPLAN

Rushworth Street



UNIT 1

- | | | | |
|----|-------------------------|---|-------------------------|
| 40 | OPEN PLAN WORKSTATIONS | 1 | TOUCHDOWN TABLE |
| 1 | 12 PERSON MEETING ROOM | 3 | COLLABORATION AREAS |
| 1 | 8 PERSON MEETING ROOM | 1 | INFORMAL MEETING TABLES |
| 2 | 6 PERSON MEETING BOOTHS | 1 | PRINT AREA |
| 2 | ZOOM PODS | 1 | COMMS ROOM |

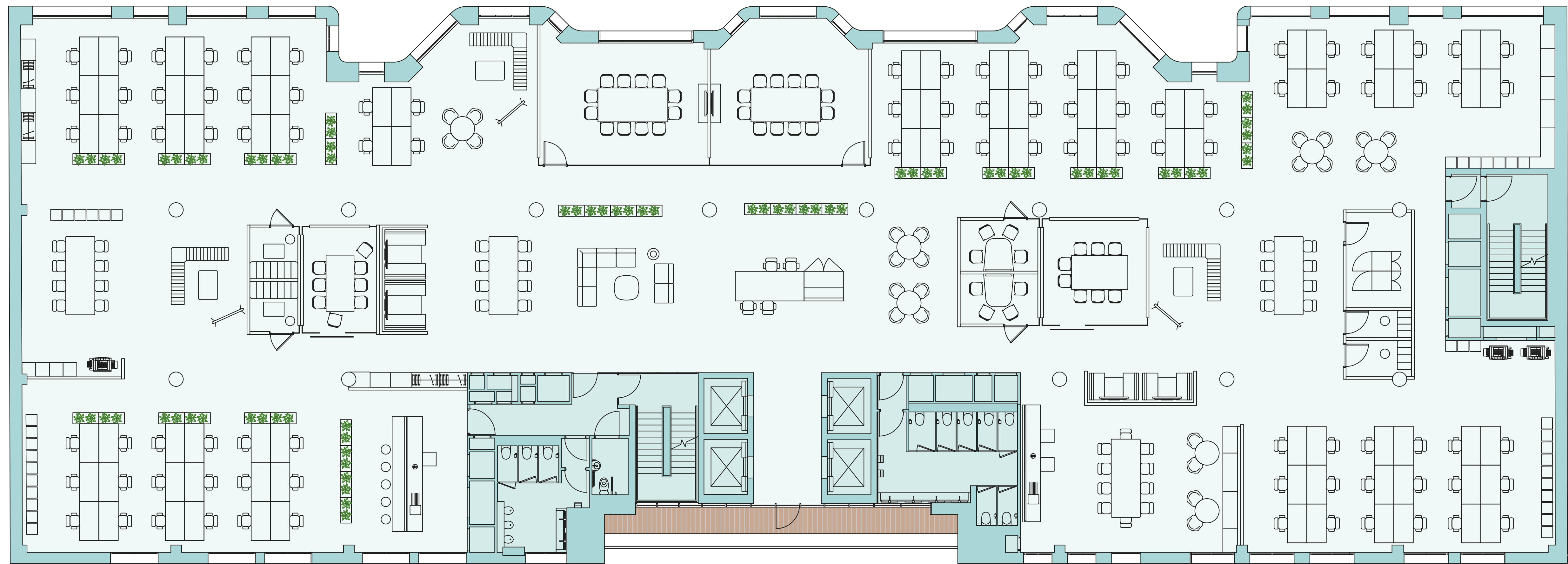
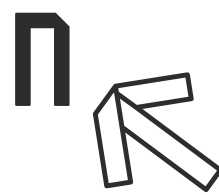
UNIT 2

- | | | | |
|----|-------------------------|---|-------------------------|
| 52 | OPEN PLAN WORKSTATIONS | 1 | TOUCHDOWN TABLE |
| 1 | 12 PERSON MEETING ROOM | 1 | COLLABORATION AREAS |
| 1 | 8 PERSON MEETING ROOM | 3 | INFORMAL MEETING TABLES |
| 2 | 4 PERSON MEETING ROOM | 1 | LOUNGE AREA |
| 2 | 4 PERSON MEETING BOOTHS | 1 | PRINT AREA |
| 2 | ZOOM PODS | 1 | COMMS ROOM |

SOUTHWORKS

SECOND FLOOR SPACEPLAN

Rushworth Street



- 92 OPEN PLAN WORKSTATIONS
- 2 12 PERSON MEETING ROOM
- 2 8 PERSON MEETING ROOM
- 2 4 PERSON MEETING ROOM
- 4 ZOOM PODS

- 2 6 PERSON MEETING BOOTHS
- 2 4 PERSON MEETING BOOTHS
- 1 TOUCHDOWN TABLE
- 3 COLLABORATION AREAS

- 4 INFORMAL MEETING TABLES
- 1 LOUNGE AREA
- 2 PRINT AREA
- 1 COMMS ROOM